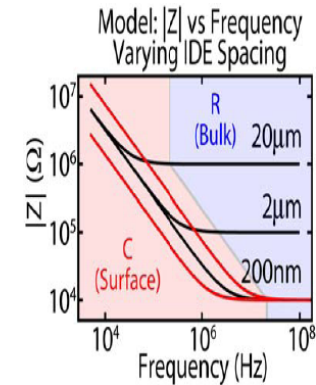
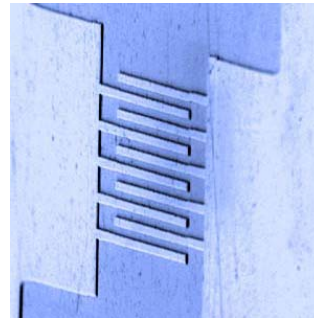
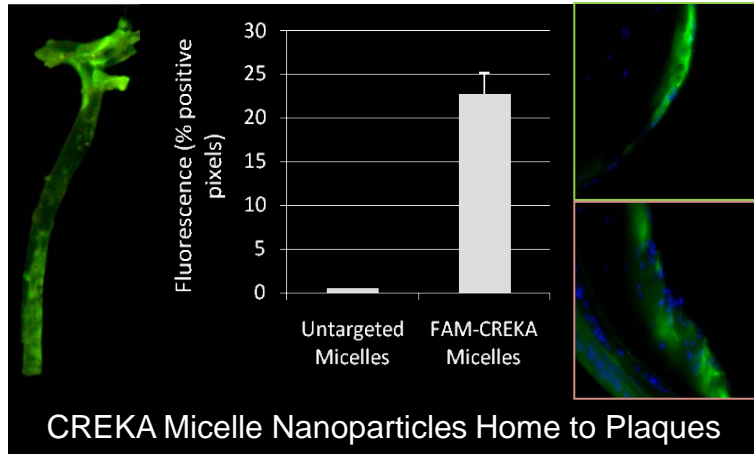
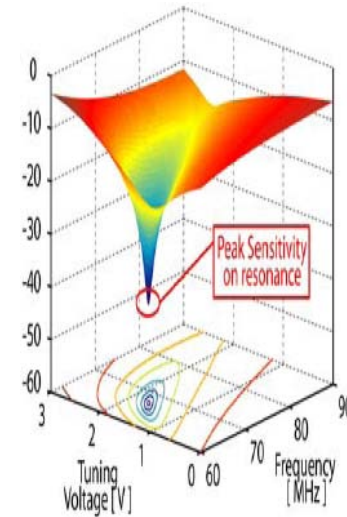


Program for Excellence
in Nanotechnology
(PEN)

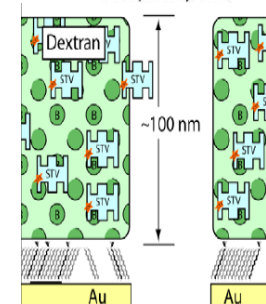
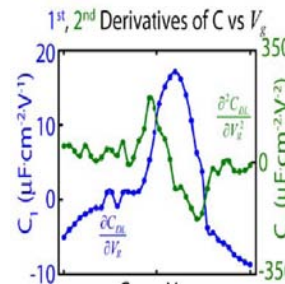
Nanotherapy for Vulnerable Plaque



Multiplexed electronic measurements of distinct targets



RGD-PAMs bind activated Platelets in Platelet Rich Plasma

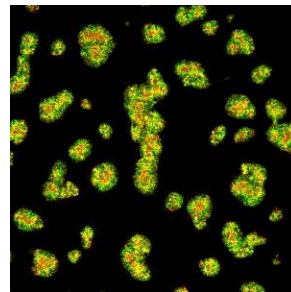


Nanoelectronic Molecular Sensing- Interfacial Capacitance and Bio-functionalization

Hydrophilic peptides

Hydrophobic core

10-20 nm



Protein Analogous Micelles (PAMS)

Targeting Phage to Vulnerable Plaque

